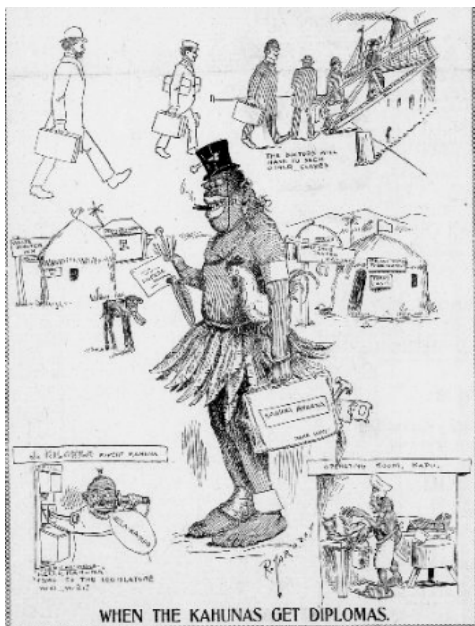


## *Western Legislative Impacts on Traditional Hawaiian Medical Practice*

June 30, 2016 6:00 pm

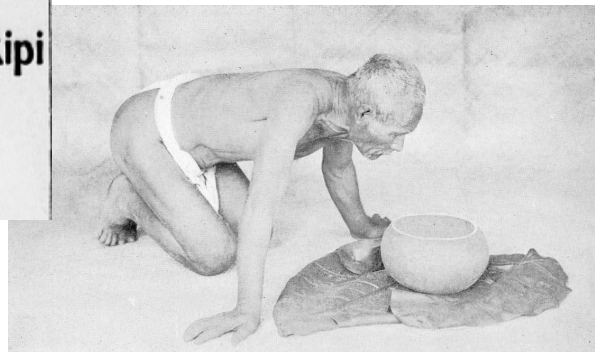
Līhu'e Public Library Conference Room



Hawai'i's indigenous culture has contributed to unique laws accommodating culturally based medical practices. Catastrophic medical events such as epidemics and the introduction of Western medicine required laws to regulate the recognition of traditional practitioners. The presentation discusses the demands for laws, which addressed cultural medical practices such as *lā'au lapa'au*, and *lomilomi* as well as federal recognition of our indigenous medical traditions.

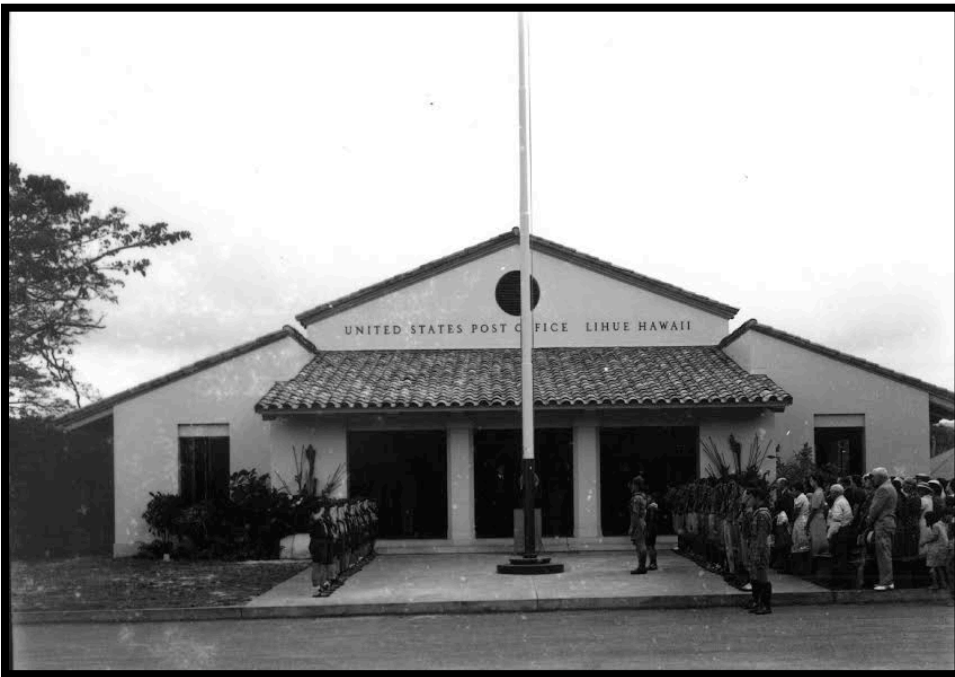
Helen Wong Smith discusses the history of efforts to recognize Hawaiian traditional medical practitioners throughout the five governments of Hawai'i.

**KAHUNA  
TALKS OF  
HIS TRADE**  
—  
**Says Rev. J. Kekipi  
Is Chief of  
All.**



*“You’ll See Lots of Friends at the Lihue Post Office”*  
*Lihue: Root and Branch of a Hawai‘i Town*  
By Donna Stewart

Author Pat Griffin provides detailed histories of many distinctive buildings in the town core of Lihue, including their origins, land acquisition, architectural designs, funding, and their current uses. The Lihue post office is a beautiful building in the middle of town that is important to business, government and personal patrons. The staff members are always helpful and cheerful, even during the Christmas rush and where you will see lots of folks who work and live in Lihue.



“The charming Mission Revival-style post office stands as proof that public pressure can occasionally become the irresistible force that shifts a seeming immovable government bureaucracy. “The original building design was a government issue, Depression-era plan for a mini-fortress completely discordant with Hawai‘i’s climate or the adapted Mediterranean style currently in fashion. Such a structure “would have fitted

nicely into a farming community in the Middle West,” groused the Garden Island. Public complaints, however, were refused consideration in Washington, D.C., until after the plans had been approved, construction bids opened, and lot clearing began. It was then that postal engineer Floyd Williams visited Kaua‘i, recognized the inappropriateness of the design, and successfully interrupted the process. Williams gathered input from Chamber of Commerce members and other residents, then confined authorities to draw up new plans sensitive to a tropical setting. The Mediterranean-via-California-style building, dedicated in May 1939, was the result of his efforts.

“In 1927, territorial senator Charles Rice introduced a resolution asking the U.S. congress to provide funds for a new post office, a request that took a decade to become reality. After an initial proposal to place the post office on the county building lawn, the federal government paid \$4,500 for the lot the plantation offered on the Nāwiliwili side of the Bank of Hawaii.

“The dedication of the new post office on May 6, 1939, recognized many of those who had negotiated the bureaucratic maze leading to its construction.”

April – May MembershipsIndividual

Alfred Gray  
 Janelle Kienow-Hale  
 Martie Law  
 Keao NeSmith  
 Pua Rossi-Fukino  
 Ben Taba  
 Wren Perdue

Family

Andrew & Nancy Bushnell  
 Donn & Gayle Carswell  
 Decker-Buckley Family  
 Scott & RuthAnne Jackson  
 Dorothy & Richard Perry  
 Mr. & Mrs John P. Sabo  
 Suellen Stites  
 Ron & Laura Wiley

Senior

Delia Akaji  
 Bob Bortfeld  
 Pat & Ralph Daehler  
 Mr. & Mrs William Hayward Jr.  
 Mr. Dennis Lo  
 Owen Seki

Supporting

Leland Nishek  
 David & Lynne Dee Shay  
 Donna & David Stewart

Contributing

Alexis & Mike Boilini  
 Linda Moriarty

Patron

Sam Pratt

Small Business

Palmer W. Hafdahl

Donations

Donn and Gayle Carswell  
 Helen Cooney

Planned Gift

Joan Pratt

## A Word from the President

Kaua'i Historical Society's hardworking Executive Director, Helen Wong Smith, has been elected a Fellow of the Society of American Archivists (SAA).

Congratulations Helen! The last time a member was elected from Hawaii was

Agnes C. Conrad in the late 1960s. The distinction of Fellow is the highest honor bestowed on individuals by SAA, the oldest and largest national professional association dedicated to the needs and interests of archives and archivists, and is awarded for outstanding contributions to the archival profession.



Governor Ige proclaimed May Historic Preservation Month in Hawai'i.

This was celebrated by a variety of presentations and activities throughout the state. Helen Wong Smith, representing the Kauai Historical Society brought in two colleagues, DeSoto Brown of the Bernice Pauahi Bishop Museum and Linda Hee, Conservator/Curatorial Technician for Research Corporation of the University of Hawai'i conducted a hands on workshop, "Preserving Your Ohana Treasures" Saturday, May 7 at Queen Lili'uokalani Children's Center (QLCC) in Lihu'e. It was well attended and feedback indicated a high satisfaction of the content and working tools provided. The trio have given this workshop on several islands the past decade this being the first time on Kaua'i. Mahalo to the Office of Hawaiian Affairs and QLCC for their financial support allowing both our members and the larger community to participate in this workshop.

We have a new administrative assistant in the person of Delia Akaji. Born on Kaua'i reared in Kōloa, and a resident of Kalaheo since 1973, she and husband retired Fire Captain Bruce Akaji have four children and (come August) 10 grandchildren. Delia's professional experience includes Human Resources Administrative Assistant at the Grand Hyatt Kauai and Kauai Veterans Memorial Hospital. We have already benefited from Delia's deep roots in our community and fresh perspectives.

## Separate But Related Family Collections Donated

Descendants of two prominent Kaua'i families have donated papers held for generations this past month reflecting the nature of a small community. Kaua'i born Retired Lt. Col. John Meadows is a great-grandson of Judge Samuel Burbank, noted for the deep plow, which improved production at Kōloa Sugar donated records of the family and takes great pride in Burbank's papers recognizing his nationality of the Kingdom of Hawai'i. This supplements recollections by Samuel's daughter Mary who wrote to D.R. Isenberg about the death of Samuel on May 10, 1857. Mrs. Isenberg's grandparents Mr. and Mrs. Rice aided Mrs. Burbank at her husband's demise.

Pennsylvania resident Patricia Dillon, a granddaughter of Carl Henry William Isenberg born at Kekaha (1888-1978) donated family photos, artwork, and memorabilia, which include 143 digitized images of the family, their home, and Kaua'i landscapes. Son of Otto Ernest George Isenberg and Mary Helen Manaiula Lewis Isenberg Carl was named after his uncle the other being Paul. Her donation supplements our Isenberg Collection (MS 57), which contains nine boxes of family papers and photographs. Mahalo to both donors for enriching the historical record of our islands with these family treasures.

**Our Mission** is to collect, preserve and disseminate the oral, written and pictorial history of Kaua'i County and to educate ourselves and the public about the history and cultures of Kaua'i and Ni'ihau.

### Board of Directors

Bill Wilcox, President  
Reg Gage, Vice President  
Kay Koike, Secretary  
Stu Burley  
Lori Dill  
Pua Rossi-Fukino  
Gaetano Vasta  
Linda Warriner

### Executive Director

Helen Wong Smith, MLIS, CA

### Administrative Assistant

Delia Akaji

Kaua'i Historical Society is a private, non-profit 501(c)(3) organization supported by its membership and grants.

P.O. Box 1778  
Līhu'e, HI 96766  
Open Monday-Friday, 10:00-4:00  
Phone 808-245-3373; fax 808-245-8693

The Kaua'i Historical Society (KHS) Newsletter is written, produced, printed, and distributed by the KHS office. The contents of this publication may not be reproduced without the express permission of the Kaua'i Historical Society. Copyright 2016

## Preservation Workshop Treasured By Participants

Collaboration was key to hold the daylong workshop "Preserving Your Ohana Treasures" on May 7 [See *A Word from the President*] when three longtime colleagues shared with twenty participants methods and supplies to care for family treasures.



DeSoto Brown advises on conditions to preserve photos and art on paper.



The only textile conservator in the State, Linda Hee knows how to handle pests!



Helen Wong Smith provides hints on paper and books.